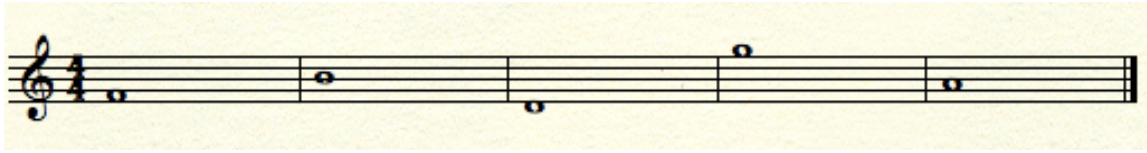
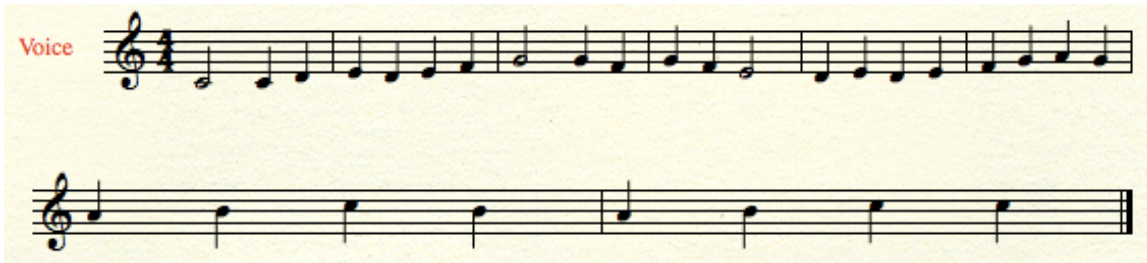


A. Please write the note name underneath each example.



B. Please write the correct SOLFEGE syllable underneath each note. You should write only the first letter of the syllable.



C. Write the correct letter underneath each note. It will spell a word!



D.

1. How many beats are in a whole note? _____

2. How many beats are in a half note? _____

3. How many beat(s) is a quarter rest? _____

4. What fraction of a beat is one eighth note? _____

Acronyms

1. How do you remember the lines of the treble clef? _____

2. How do you remember the spaces of the treble clef? _____

3. How do you remember the lines of the bass clef? _____

4. How do you remember the spaces of the bass clef? _____